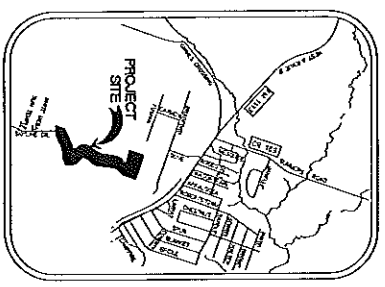
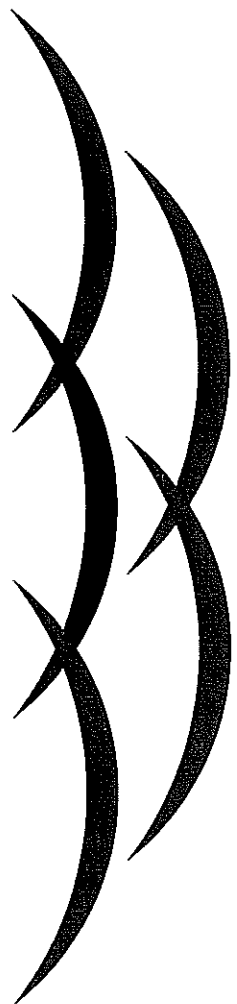


CONSTRUCTION SET for: THE RESERVE AT SKYLINE MOUNTAIN

MAYOR
JOHN HULL
COUNCIL MEMBERS
CHERYL MEREDITH
MARK PETERSON
GARY KENT
MARY SMITH
KENN SMITH
JIM SCHMITZ
FRANK SEFFROOD
CITY MANAGER
ANDREA GARDNER
PUBLIC WORKS DIRECTOR
DARYL UPTMORE



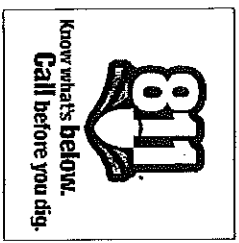
VICINITY MAP



CITY OF COPPERAS COVE CITY OF FIVE HILLS



ENGINEERING • PLANNING • SURVEYING
CONSTRUCTION MANAGEMENT
TURLEY ASSOCIATES, INC.
301 N. 3rd ST. TEMPLE, TEXAS 76501
E-MAIL: VDTURLEY@AOL.COM
(254) 773-2400
FAX NO. (254) 773-5998



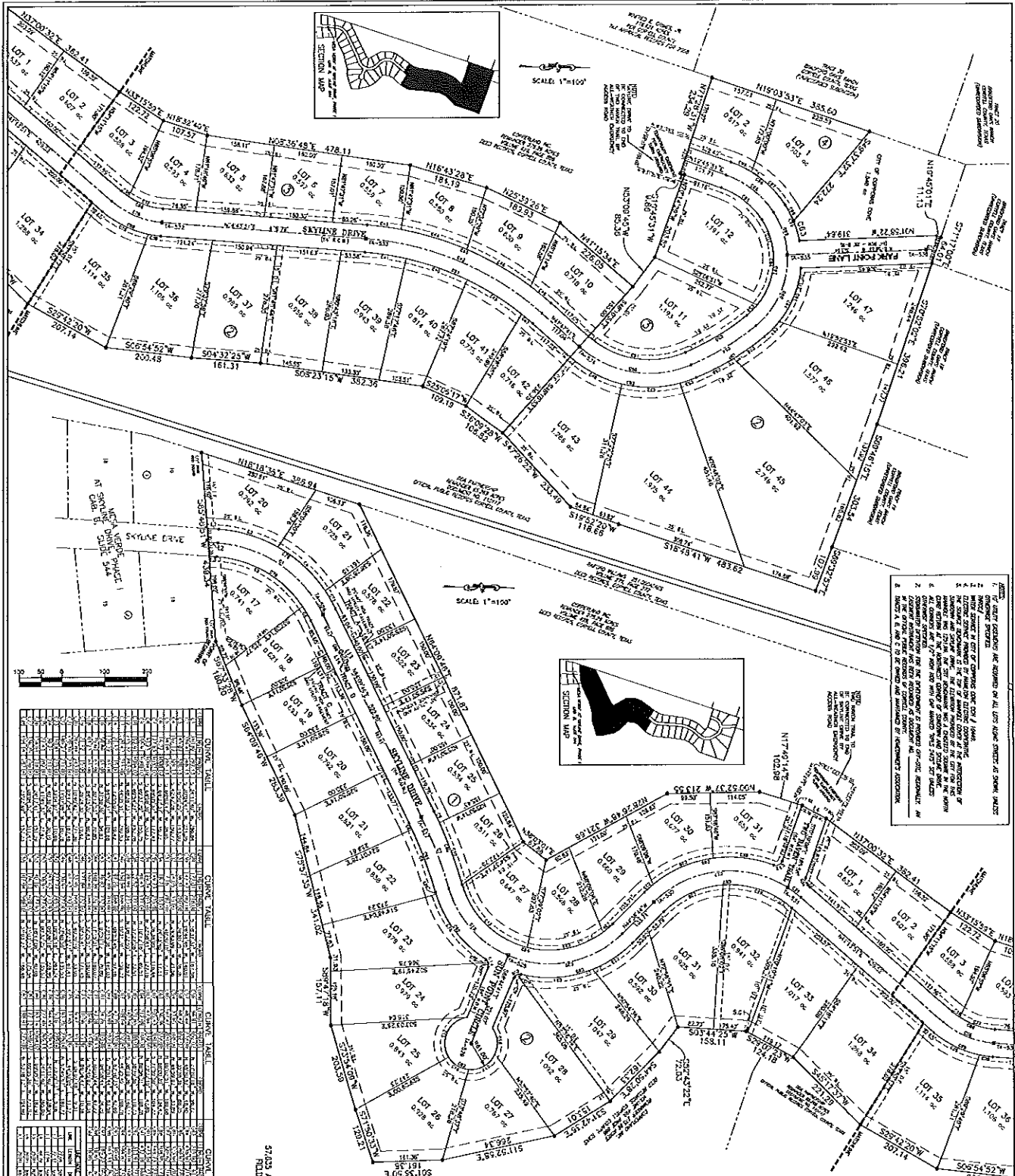
INDEX

- 1 FINAL PLAN AND TOPOGRAPHY
- 2 UTILITY PLAN AND TOPOGRAPHY
- 3 PRELIMINARY EROSION CONTROL PLAN
- 4 PRE-DRAINAGE PLAN
- 5a POST-DRAINAGE PLAN
- 5b POST-DRAINAGE PLAN
- 6 DETENTION DETAILS
- 7 SKYLINE DRIVE STA 14+00 TO STA 74+50
- 8 SKYLINE DRIVE STA 74+50 TO STA 134+50
- 9 SKYLINE DRIVE STA 134+50 TO STA 194+70
- 10 SKYLINE DRIVE STA 194+70 TO STA 254+90
- 11 SKYLINE DRIVE STA 254+90 TO STA 324+10
- 12 SKYLINE DRIVE STA 324+10 TO STA 424+10
- 13 SKYLINE DRIVE STA 384+50 TO STA 424+10
- 14 SKYLINE DRIVE STA 424+10 TO STA 484+00
- 15 SUN POINT CIRCLE STA 0+00 TO STA 44+00
- 16 SUN POINT CIRCLE STA 44+00 TO STA 144+00
- 17 PWD PARK TAIL STA 0+00 TO STA 34+00
- 18 OFFSITE SEWER STA 0+00 TO STA 54+00
- 19 OFFSITE SEWER STA 54+00 TO STA 94+00
- 20 OFFSITE SEWER STA 94+00 TO STA 144+00
- 21 CITY OF COPPERAS COVE STANDARD DETAILS
- 22 CITY OF COPPERAS COVE STANDARD DETAILS
- 23 CITY OF COPPERAS COVE STANDARD DETAILS
- 24 CITY OF COPPERAS COVE STANDARD DETAILS

John Hull

 Mayor

13--480/14--026
12691-D

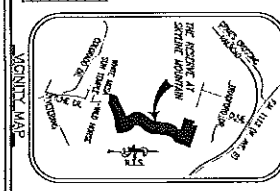


THE CITY ENGINEERS ARE ADVISED BY ALL LOTS SHOWN SPECIES OF SHOWN, NAME, AND SIZE OF THE SPECIES.

THE CITY ENGINEERS ARE ADVISED BY ALL LOTS SHOWN SPECIES OF SHOWN, NAME, AND SIZE OF THE SPECIES.

THE CITY ENGINEERS ARE ADVISED BY ALL LOTS SHOWN SPECIES OF SHOWN, NAME, AND SIZE OF THE SPECIES.

CLUSTER TABLE	CLUSTER TABLE
LOT 1	LOT 1
LOT 2	LOT 2
LOT 3	LOT 3
LOT 4	LOT 4
LOT 5	LOT 5
LOT 6	LOT 6
LOT 7	LOT 7
LOT 8	LOT 8
LOT 9	LOT 9
LOT 10	LOT 10
LOT 11	LOT 11
LOT 12	LOT 12
LOT 13	LOT 13
LOT 14	LOT 14
LOT 15	LOT 15
LOT 16	LOT 16
LOT 17	LOT 17
LOT 18	LOT 18
LOT 19	LOT 19
LOT 20	LOT 20
LOT 21	LOT 21
LOT 22	LOT 22
LOT 23	LOT 23
LOT 24	LOT 24
LOT 25	LOT 25
LOT 26	LOT 26
LOT 27	LOT 27
LOT 28	LOT 28
LOT 29	LOT 29
LOT 30	LOT 30
LOT 31	LOT 31
LOT 32	LOT 32
LOT 33	LOT 33
LOT 34	LOT 34
LOT 35	LOT 35
LOT 36	LOT 36
LOT 37	LOT 37
LOT 38	LOT 38
LOT 39	LOT 39
LOT 40	LOT 40
LOT 41	LOT 41
LOT 42	LOT 42
LOT 43	LOT 43
LOT 44	LOT 44
LOT 45	LOT 45
LOT 46	LOT 46
LOT 47	LOT 47
LOT 48	LOT 48
LOT 49	LOT 49
LOT 50	LOT 50
LOT 51	LOT 51
LOT 52	LOT 52
LOT 53	LOT 53
LOT 54	LOT 54
LOT 55	LOT 55
LOT 56	LOT 56
LOT 57	LOT 57



FINAL PLAT OF
THE RESERVE AT SKYLINE MOUNTAIN
 4 Blocks, 57 Lots, 3 Tracts

A SUBDIVISION IN THE CITY OF COPPERAS COVE
 CORNELL COUNTY, TEXAS

57.635 ACRES FULLY DESIGNED BY METS & BONDS BY SEPARATE FIELD NOTES
 FIELD NOTES PREPARED AND ATTACHED TO DEDICATION INSTRUMENT

TURLEY ASSOCIATES, INC.

ENGINEERING • PLANNING • SURVEYING
 CONSTRUCTION MANAGEMENT

301 N. 3rd St. Temple, Texas 76701
 E-MAIL: info@turleygaol.com FAX NO. (254) 733-3828

REVISIONS
NO. DATE BY DESCRIPTION
1 08/14/08 JMA
2 08/14/08 JMA
3 08/14/08 JMA
4 08/14/08 JMA
5 08/14/08 JMA
6 08/14/08 JMA
7 08/14/08 JMA
8 08/14/08 JMA
9 08/14/08 JMA
10 08/14/08 JMA
11 08/14/08 JMA
12 08/14/08 JMA
13 08/14/08 JMA
14 08/14/08 JMA
15 08/14/08 JMA
16 08/14/08 JMA
17 08/14/08 JMA
18 08/14/08 JMA
19 08/14/08 JMA
20 08/14/08 JMA
21 08/14/08 JMA
22 08/14/08 JMA
23 08/14/08 JMA
24 08/14/08 JMA
25 08/14/08 JMA
26 08/14/08 JMA
27 08/14/08 JMA
28 08/14/08 JMA
29 08/14/08 JMA
30 08/14/08 JMA
31 08/14/08 JMA
32 08/14/08 JMA
33 08/14/08 JMA
34 08/14/08 JMA
35 08/14/08 JMA
36 08/14/08 JMA
37 08/14/08 JMA
38 08/14/08 JMA
39 08/14/08 JMA
40 08/14/08 JMA
41 08/14/08 JMA
42 08/14/08 JMA
43 08/14/08 JMA
44 08/14/08 JMA
45 08/14/08 JMA
46 08/14/08 JMA
47 08/14/08 JMA
48 08/14/08 JMA
49 08/14/08 JMA
50 08/14/08 JMA
51 08/14/08 JMA
52 08/14/08 JMA
53 08/14/08 JMA
54 08/14/08 JMA
55 08/14/08 JMA
56 08/14/08 JMA
57 08/14/08 JMA
58 08/14/08 JMA
59 08/14/08 JMA
60 08/14/08 JMA
61 08/14/08 JMA
62 08/14/08 JMA
63 08/14/08 JMA
64 08/14/08 JMA
65 08/14/08 JMA
66 08/14/08 JMA
67 08/14/08 JMA
68 08/14/08 JMA
69 08/14/08 JMA
70 08/14/08 JMA
71 08/14/08 JMA
72 08/14/08 JMA
73 08/14/08 JMA
74 08/14/08 JMA
75 08/14/08 JMA
76 08/14/08 JMA
77 08/14/08 JMA
78 08/14/08 JMA
79 08/14/08 JMA
80 08/14/08 JMA
81 08/14/08 JMA
82 08/14/08 JMA
83 08/14/08 JMA
84 08/14/08 JMA
85 08/14/08 JMA
86 08/14/08 JMA
87 08/14/08 JMA
88 08/14/08 JMA
89 08/14/08 JMA
90 08/14/08 JMA
91 08/14/08 JMA
92 08/14/08 JMA
93 08/14/08 JMA
94 08/14/08 JMA
95 08/14/08 JMA
96 08/14/08 JMA
97 08/14/08 JMA
98 08/14/08 JMA
99 08/14/08 JMA
100 08/14/08 JMA

FINAL PLAT OF
THE RESERVE AT SKYLINE MOUNTAIN
 4 Blocks, 57 Lots, 3 Tracts

57.635 ACRES A SUBDIVISION IN THE CITY OF COPPERAS COVE CORNELL COUNTY, TEXAS
 57.635 ACRES FULLY DESIGNED BY METS & BONDS BY SEPARATE FIELD NOTES PREPARED
 AND ATTACHED TO DEDICATION INSTRUMENT
 PLAT SPECIFIED JULY 12, 2008

TURLEY ASSOCIATES, INC.

ENGINEERING • PLANNING • SURVEYING
 CONSTRUCTION MANAGEMENT

301 N. 3rd St. Temple, Texas 76701
 E-MAIL: info@turleygaol.com FAX NO. (254) 733-3828